



# UPSTATE NY PDRC

Newsletter, November 2020 Issue 7

*A NYSED Funded Project for Access and Equity -  
Free of cost services through Title II, Part A and Title IV, Part A of ESSA*

## Leveraging the Power of Parent Partnerships

### UPCOMING EVENTS

See what's happening this [month](#).

### PRACTITIONER SPOTLIGHT

[Meet Marci Galinkin; Bet Shraga  
Hebrew Academy in Albany, NY](#)

### DID YOU MISS IT?

[Check out previous newsletters](#)

### ARCHIVED WEBINARS

Get inspired with  
[these PD webinars](#).

November is  
National Parental  
Involvement Month!



Family engagement is a partnership. It is about the many ways families promote their children's learning: as guides and mentors, co-learners, and advocates for better educational opportunities for all. Research at the federal, state and local levels increasingly calls for a long-term process of building trust, sharing ideas, and making joint decisions that benefit children's learning and development.

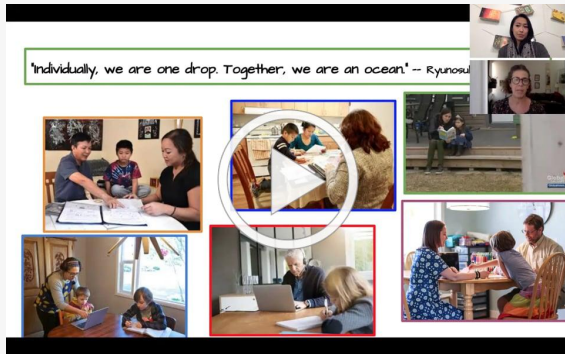
During the summer of 2020, the American Federation of Teachers and the National Parent Teacher Association came together to address a common question: *How can parents and teachers be meaningfully engaged during times of crisis?* The two organizations conducted a joint project to bring parents and teachers together in focus groups. Participants in these focus groups were asked:

1. *Were you engaged in the spring closure decisions and, if so, how?*
2. *Were you engaged regarding fall 2020 reopening plans and, if so, how?*
3. *What do you want to happen differently moving forward?*
4. *What, if anything, is missing or not covered with our questions?*

Key findings from the focus groups include challenges with top-down, one-way communications (robo-calls, texts, emails and media announcements), as well as survey questions that pitted the needs of teachers and the needs of families against one another. Positive efforts at partnerships were also reported...

[Click Here to Read More!](#)

## FEATURED QUICK GUIDE: Family Engagement



[More Quick Guides Here! Including:  
Google Classroom Organization,  
Flipped Learning, Restorative  
Practices, and many more!](#)

"Meaningful family engagement necessitates a shift in mindset: from doing to and for families to doing with them; from being the expert to acknowledging parents as experts; from a one-size-fits all approach to personalizing family engagement."

-Casper, M., Lopez, M.E., & Hanebutt, R. (2019). The family engagement playbook

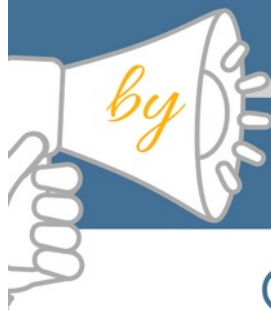
## RESOURCE ROUNDUP: Looking for More? Look Here!

# THE 6 SHIFTS



## NEEDED FOR BETTER FAMILY ENGAGEMENT

SHIFTS THAT SUCCESSFUL SCHOOLS, ORGANIZATIONS, & COALITIONS ARE MAKING TO DEVELOP KEY CHARACTER STRENGTHS IN YOUTH


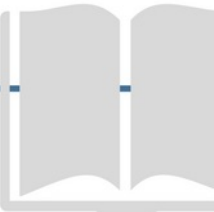



ENGAGING FAMILIES AS PARTNERS

OLD

VS.

NEW

01	STARTING WITH MESSAGING TO FAMILIES	>	STARTING WITH <b>LISTENING</b> TO FAMILIES	
02	PROVIDING PROGRAMS FOR FAMILIES	>	BUILDING <b>RELATIONSHIPS</b> WITH FAMILIES	
03	BUYING INTO NEGATIVE STEREOTYPES OF FAMILIES	>	HIGHLIGHTING <b>STRENGTHS</b> , EVEN AMID CHALLENGES	
04	GIVING FAMILIES EXPERT ADVICE ABOUT WHAT TO DO	>	ENCOURAGING FAMILIES TO EXPERIMENT WITH <b>NEW PRACTICES</b>	
05	BUILDING COALITIONS OF FORMAL SYSTEMS TO SUPPORT CHILDREN'S SUCCESS	>	EMPHASIZING PARENTING AS A <b>RELATIONSHIP</b>	
06	FOCUSING ON PARENTING AS A SET OF TECHNIQUES	>	SEEING RELATIONSHIPS AS A <b>CRITICAL</b> <b>COMPONENT</b> OF COMMUNITY COALITIONS	



Click to download the full research study, *Don't Forget the Families*: <http://bit.ly/2sqBwWF>

**Search**  
INSTITUTE



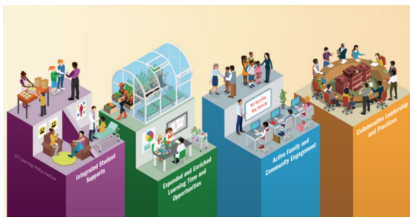
[The Red Carpet Treatment](#)



[The National PTA Center for Family Engagement](#)



[Family Engagement tools and resources at Edutopia](#)



### New York State Community Schools



### 5 Ways to Foster Meaningful Connection



### Project Appleseed

UPSTATE PDRC: SERVING ALL NYS REGIONS NORTH OF NYC

How can we help you? Visit our website to find out more!